

Features

- World-Class Faculty
- A Highly Flexible Curriculum
- Corporation with Global Leading Companies
- Effective Peer-To-Peer Learning Through Highly Diverse Classes
- Emphasis on Team/Project Work and Soft Skill Training

World-Class Business Education
with a Strong Sino-German Focus



同济经管
TONGJI SEM

MANNHEIM
BUSINESS SCHOOL

Overview

The MANNHEIM-TONGJI Dual Degree Executive MBA (EMBA) Program with its strong Sino-German focus responds to the growing demand for managers who can successfully navigate the challenges of both cultures. It will provide executives from around the world with the skills and tools they need for positions in international top management.

The Universities of both Mannheim and Tongji are renowned for their high academic quality, cutting-edge research and teaching excellence. They are two partners with significant experience in executive education. Moreover, both contain excellent corporate and alumni networks and demonstrate a high Sino-German affinity. The MANNHEIM-TONGJI Executive MBA (EMBA) makes best use of this valuable collaboration to provide participants with the very best in EMBA education.



ONE Program: Two Prestigious Institutions
Program: Three Different Study Options
Program: Endless Career Opportunities

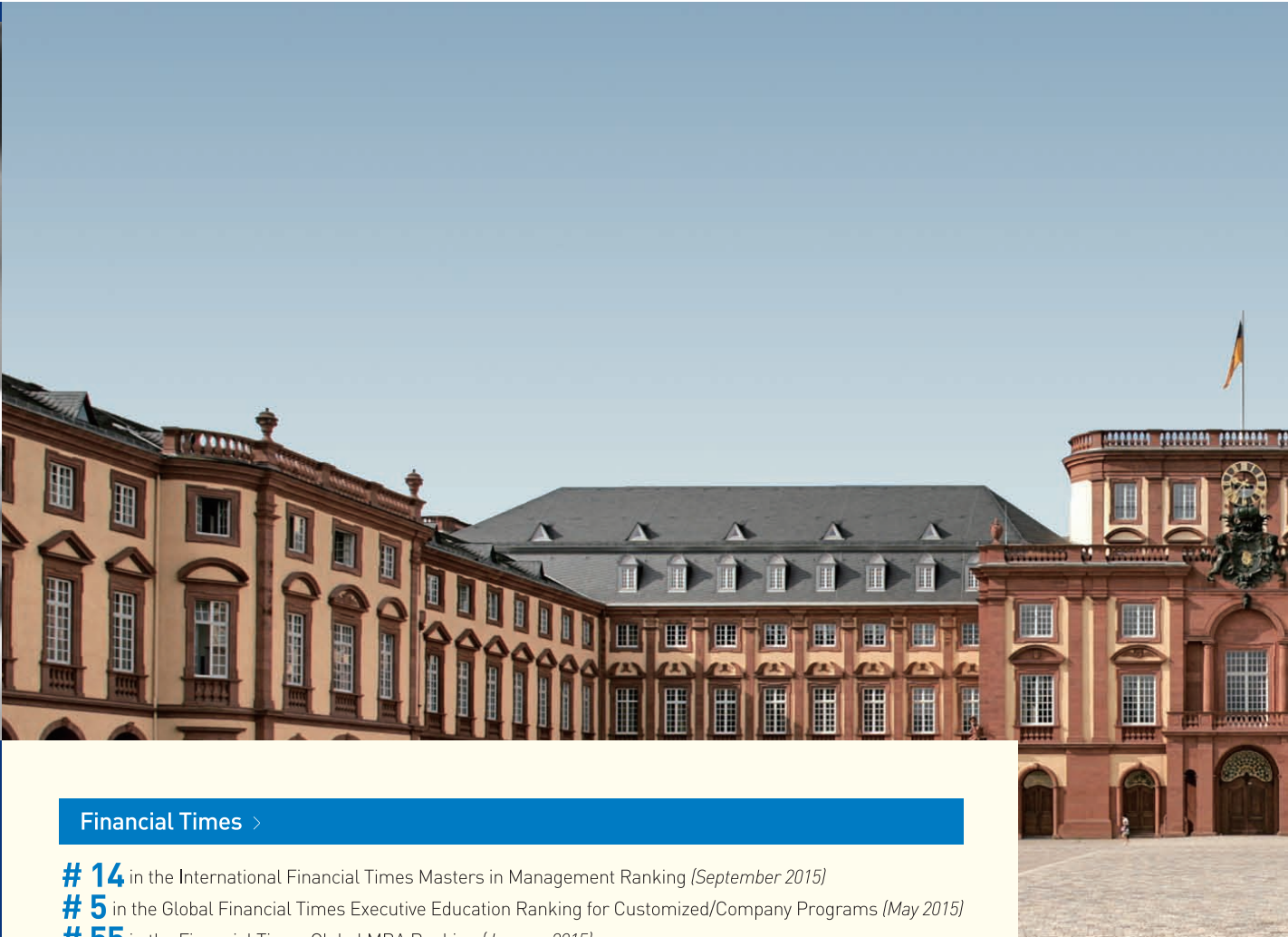


Contact Us

School of Economics & Management, Tongji University
Add: Rm. 403, Block C, Sino-French Center, No. 1239, Si-ping Road, Shanghai, China, 200092
Tel: +86-21-65980875
Fax: +86-21-65980695
Web: <http://emba.tongji.edu.cn>
Email: tjmbsema@tongji.edu.cn



MANNHEIM-TONGJI
Dual Degree Executive MBA Program



Financial Times

- # 14 in the International Financial Times Masters in Management Ranking (September 2015)
 - # 5 in the Global Financial Times Executive Education Ranking for Customized/Company Programs (May 2015)
 - # 55 in the Financial Times Global MBA Ranking (January 2015)
 - # 50 in the Financial Times Global Executive MBA Ranking (October 2014)
- Among Europe's **Top 20** Business Schools in the Ranking of the Financial Times (2014)

The Economist

- Among the World's **Top 30** Executive MBA Programs in the Ranking of the Economist (2015)
- Among the World's **Top 40** MBA Programs in the Ranking of the Economist (2014)

Bloomberg Businessweek

- Among the **Top 20** Non-U.S. MBA Programs in the Ranking of Bloomberg Businessweek (2014)



Class Profile ➡

Average age: **36** yrs

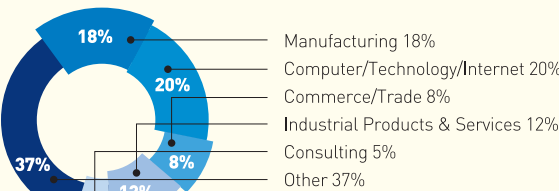
Average work experience: **12** yrs

40% female participants

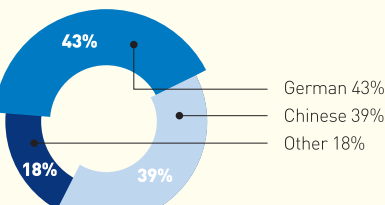
More than **60%** international participants

The class profile comprises the core values of the MANNHEIM-TONGJI EMBA program with a profile showing diversity of work experience, geographical background and a wide range of previous educational experience. While bringing multiplicity of cultures and experiences to the program, our participants share a strong Sino-German affinity. Small class sizes foster active group discussions that reflect the diversity of perspectives. Due to the continuous change of class constellations, size and diversity networking opportunities are maximized.

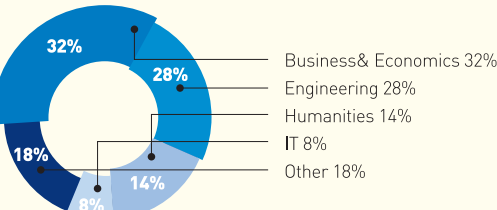
Company Sector >



Nationality >



Academic Background >



Companies ➡



MANNHEIM BUSINESS SCHOOL

If there is to be a German Harvard, it will probably be in Mannheim.

— Handelsblatt

Mannheim Business School is generally reckoned to be Germany's leading business school.

— The Economist

Germany's leading higher education institution for business and economics.

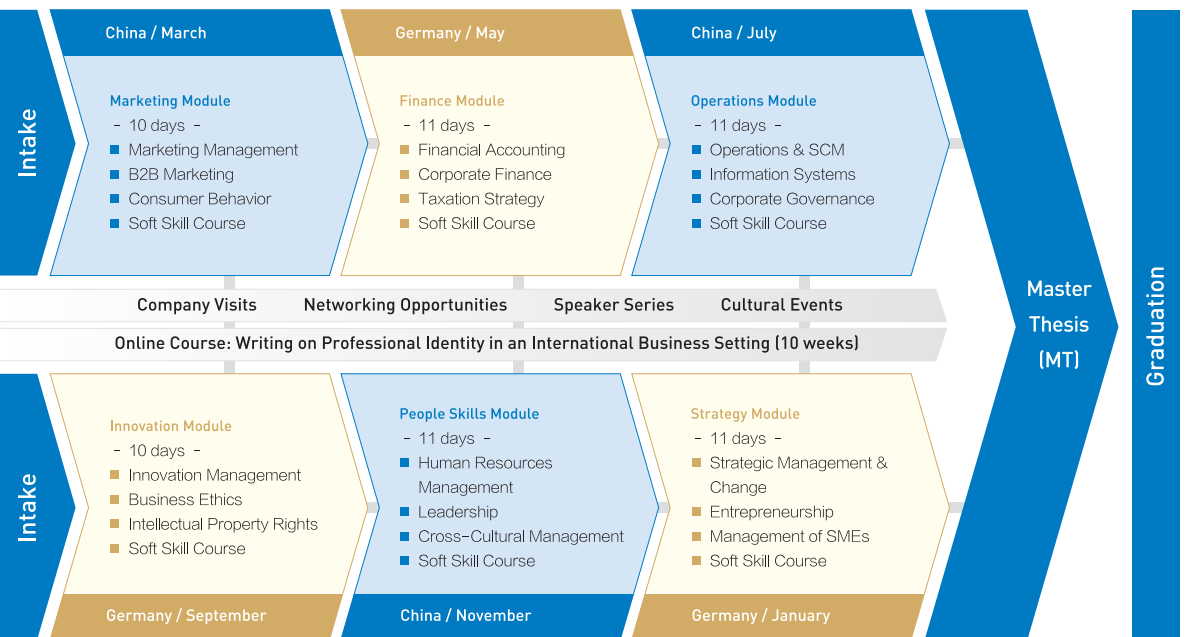
— Times Higher Education

MANNHEIM BUSINESS SCHOOL ➡

Mannheim Business School gGmbH (MBS) is the umbrella organization for management education at the University of Mannheim. It is the leading business school in Germany and among the best in the world. Additionally, it is the only German business school accredited by AACSB, EQUIS and AMBA, the leading associations of business education institutions. Mannheim Business School's faculty members have achieved global recognition for their contributions to the scientific community, their progressive teaching methods and consulting experience. The Mannheim region is globally renowned for its innovations and quality in research, science and production.

Curriculum ➡

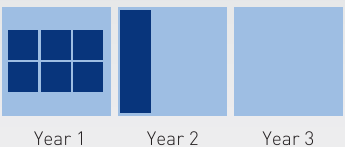
A Unique Sino-German Learning Experience



Flexibility for Executive Agendas >

In today's fast-paced business environment, executives need to be extremely flexible. For that reason, the MANNHEIM-TONGJI EMBA Program offers you three different study options. This flexible concept allows participants and companies to adapt the program to their individual career management, while at the same time enabling participants to conveniently combine their studies with work and family life.

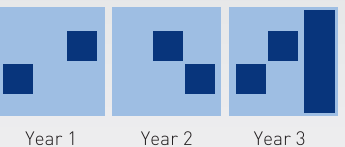
Option 1: Take the Fast Track to Your EMBA!



EMBA

Participants can complete six self-contained modules plus the Master Thesis in one and a half years and receive their dual degrees.

Option 2: An EMBA in a Timeframe of Your Choice!



EMBA

Participants can receive credit for modules and courses, followed by the completion of the Master Thesis in a maximum timeframe of three and a half years to obtain their MBA degree. You can start the EMBA program in March or September each year.

Option 3: Choose What Suits You Best!



Individual Certificates

Participants can attend individual modules or courses and receive a certificate. If you change your mind, the certificate can be the first step towards an EMBA.

■ =1 Module

Admissions ➡

Requirements >

- Bachelor degree or above
- 8 years working experience (at least five years of leadership experience);
- Fluent in English (written and oral skills) proved by TOEFL or interview;

Application Procedure >

1/ Download the Application Form

Fill out the MANNHEIM-TONGJI EMBA Application Form and send it together with the required documents to Tongji University or Mannheim Business School

2/ Pre-Screening of Application Package

Once your application has been received, it will be reviewed by the Admissions Committee

3/ Selection Interview

Interview with Admissions Committee
An admission decision will be made based on the evaluation of your application package and the selection interview within two weeks

4/ Admission

Receive the admission notification and contract
Sign and return the admission contract within two weeks to Tongji University or Mannheim Business School

* We accept applications throughout the year on a rolling admissions basis (intake in March or September).

Required Documents >

- Application form
- Copy of your passport
- Curriculum Vitae
- Two letters of reference
- Company support form
- Transcripts of all given diplomas, grades, studies and activities
- Evidence of application fee

